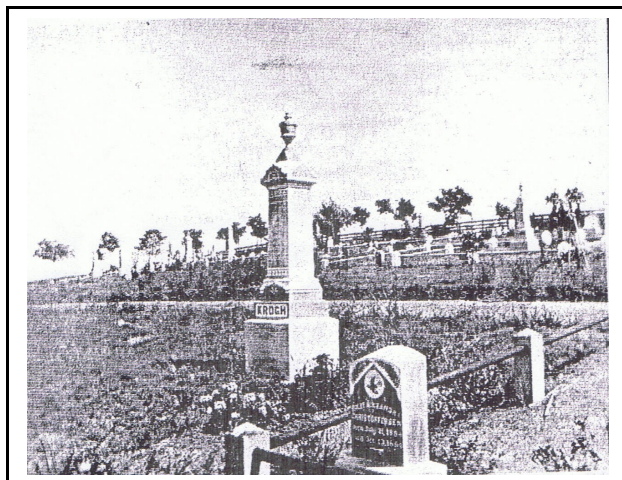


Across Oceans, Across Time® ...
Stories from the Family History & Genealogy Center



Danish Resting Places – As the older generations of Danish immigrants passed away, many were laid to rest in cemeteries associated with Danish-American churches or ones that were created specifically to serve the local Danish community. Such was the case with Springwell Cemetery in Omaha, Nebraska, seen above in its earliest known picture, which was established in early 1889, supported by the local Danish Brotherhood lodges and later, by the Danish IOOF chapter. Now in its 123rd year, it is still an active cemetery serving individuals of Danish heritage in the greater Omaha region. An updated listing of burials in the cemetery and minutes of the cemetery board are on file at the Family History & Genealogy Center.



Like Springwell, some of these Danish cemeteries are urban, but many are country churchyards located in areas where Danes formerly lived, but where the population has since become more ethnically diverse. Lest they be forgotten, the FHGC is trying to collect the names and locations of as many predominantly Danish cemeteries as possible. If you know of one, please let us know by contacting librarian@danishmuseum.org.

The Danish Immigrant Museum

Your Museum in the Heart of the Continent
2212 Washington St., Elk Horn, Iowa 51531

Become a member

Contact us: 1-800-759-9192 or www.danishmuseum.org or follow us on Facebook