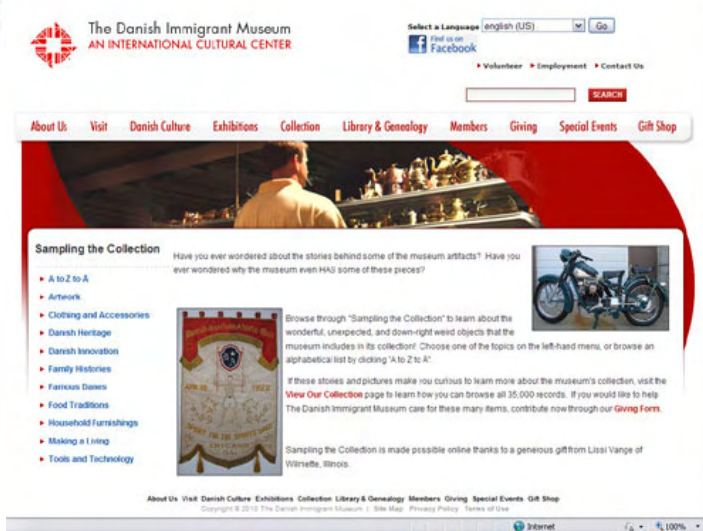




Now online: *Sampling the Collection!*



Enjoy stories and pictures of highlights from the museum’s collection. You can find this fun new resource on the museum’s website, under the Collections menu (click on “Sampling the Collection”). We will continue to add more great artifacts and their stories – so check it out again and again!



Brown Bag Lunch Series: **G** is for Gymnastics

Thursday, October 21, 12 noon, Bro Dining Room

Mark Nussle, a museum board member from the Chicago area, will share introduce the history of Danish gymnastics in the United States. Then, meet some of the gymnasts currently traveling with the National Danish Performance Team! This program is free to the public. Bring your lunch, we’ll provide the coffee!



Museum’s Interns Take Field Trip

On September 15, Curator of Collections/Registrar Angela Stanford took the Museum’s interns on a field trip to Des Moines to visit two area museums, Living History Farms and Salisbury House and Gardens. At both facilities, staff provided behind-the-scene tours of artifact storage areas and shared their museums’ strategies and policies regarding collections. It was a great experience for interns Brittany Deeds, Lisa Hansen, and Lonnie Olsen, and we look forward to more museum visits in the coming months.

Living History Farms, the 1700s Ioway Indian Site



Salisbury House and Gardens

87th Regular Meeting and 27th Annual Meeting

The Danish Immigrant Museum's 24 Board of Directors from across the United States and Denmark will come to Elk Horn, Iowa October 21 – 23, 2010. The October Board meeting begins with the **Strategic Planning Committee** meeting on Wednesday, October 20. The **Executive Committee** meets on Thursday afternoon at the museum. **All board members** plan to begin on Friday morning with reports presented by Board President Harriet Albertsen Spanel, Executive Director John Mark Nielsen, and Development Director Bruce Bro. The day continues with various museum department committee sessions and the new board members will have orientation sessions with museum staff beginning on Friday afternoon. Thursday evening, October 21, board members will take time out of their busy schedule to join the audience being entertained by the National Danish Performance Team.

Museum's 27th Annual Meeting
held at Elk Horn Town Hall
Saturday, October 23, at 11:00am
OPEN TO THE PUBLIC



Board President Harriet Albertsen Spanel conducts meeting

"Heritage Path" Location Proposed in Three Phases

Architectural plans have been submitted that are in compliance with Jens Jensen's style of "native" landscapes harmonious with nature and its ecological processes.

- Phase 1: Tribute/Flag Circle and Path
- Phase 2: Path to Jens Jensen Prairie Landscape Park
- Phase 3: Add "Soldier" course to front walk



Contact the museum's development department or visit the museum's website to learn how you can Place Your Name on a Commemorative Brick.

Museum's Social Media Presence

Keep up to date by becoming
a Fan of the museum on



Watch the museum's
Channel on



The Danish Villages Receives Iowa Great Place Designation

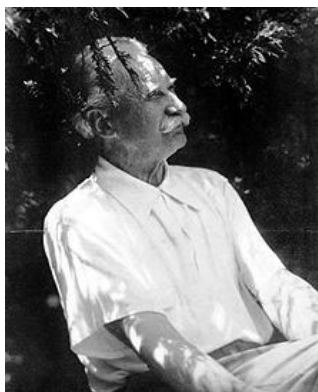


The Iowa Department of Cultural Affairs has announced that Elk Horn-Kimballton is one of two communities selected to join the Iowa Great Places program. The Iowa Great Places Citizen Advisory Board reviewed proposals from six communities in August, conducted site visits in September and determined that Elk Horn-Kimballton are ready to join the program.

In developing their proposals, Iowans are asked to address seven dimensions that make places special: engaging experiences; rich, diverse populations and cultures; a vital, creative economy; clean and accessible natural and built environments; well-designed infrastructure; a shared attitude of optimism that welcomes new ideas; and a diverse and inclusive cultural mosaic. Now in its sixth year, Iowa Great Places combines state resources with local assets to build capacity in communities, regions, neighborhoods or districts that cultivate their unique and authentic qualities. The program calls for the state to work in partnership with each Great Place to identify existing grant programs and technical assistance that may be applicable to projects contained in their work plans.

The 'Danish Villages' of Elk Horn and Kimballton will become known as a model green community, based on practices currently used in Denmark. The proposal includes a multi-use Conference Center, Fire Station and "Green" Energy Academy in Elk Horn, a Little Mermaid Recreational Trail that will connect the two communities to the north and south and The Danish Immigrant Museum to the west. The hard surface trail will have a series of sculptures depicting 13 of the most famous characters from the stories of Hans Christian Andersen, new park equipment and ball fields in Kimballton, a new band shell at the Danish Windmill and a disk golf course along the trail.

The third project will be development of the Jens Jensen Prairie Landscape Park at The



Danish Immigrant Museum. Jens Jensen was a Danish immigrant who designed elements of the Chicago Park system, as well as hundreds of landscapes for schools and universities as well as wealthy industrialists - including Henry Ford. He was also a colleague of architect, Frank Lloyd Wright. Jensen was one of America's greatest landscape designers and conservationists of the early 20th century. Using native plants and "fitting" designs, he advocated that our gardens, parks, playgrounds, roads and cities should be harmonious with nature and its ecological processes - a belief that was to become a major theme of modern American landscape design. The prairie landscape is a living expression of

openness and freedom and a great influence in shaping the spirit of people. We want visitors to leave the Jens Jensen Prairie Landscape Park, thinking about the choices they make in their gardens, local parks, and the surrounding countryside they inhabit."

If you would like to learn more about these projects or how you might be able to assist, please contact Terri Johnson, Administrative Manager and the museum's representative on the Great Places Steering Committee.

A moving experience

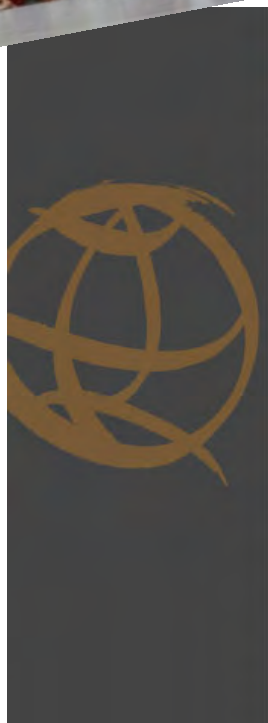
Through the world tours **The National Danish Performance Team** wants to

- present excellent performances built on the Danish display gymnastics tradition and culture
 - inspire and motivate to a healthy life style
 - have a mutual exchange of cultural experiences with people all over the world.
- * 14 women and 14 men aged between 20-28 form the team.
* A tour manager, a physical coach, a communicator and two instructors form the leader team.
* About 50 countries have invited the team through the last 10 years.
* The team has given 950 performances and 700 workshops.



Being one of the most unique display gymnastics team, the team tells stories through their magnificent performances, motivating and playful workshops and forthcoming personalities.

COMING TO YOUR COMMUNITY?



Washington DC, New York, Nebraska, Iowa, Illinois, Wisconsin, Minnesota, South Dakota, Colorado, Oregon, California, Nevada, Arizona, Hawaii

The 2010 Connections Tour

The NDPT will visit the following US states during the 2010-2011 world tour.

- **Washington DC and Virginia:** Washington DC
- **New York:** New York
- **Nebraska:** Omaha
- **Iowa:** Elk Horn
- **Illinois:** Chicago
- **Wisconsin:** Kenosha
- **Minnesota:** Minneapolis, Tyler
- **South Dakota:** Sioux Falls
- **Colorado:** Brighton, Denver/Aurora
- **Oregon:** Portland, Eugene, Junction City
- **California:** San Francisco, Palo Alto, Sacramento, Santa Monica, Hollywood, Yorba Linda
- **Nevada:** Las Vegas
- **Arizona:** Tohono O'odham Nation, Tucson
- **Hawaii:** Honolulu



For performance dates and times in your area, go to www.ndpt.dk/tour_shows/tourplan/USAtour.aspx