



APRIL 2011

News from The Danish Immigrant Museum

Brown Bag Lunch Series

April 14: **P is for Painter.** Björg Rasmussen introduces artist of Denmark's Golden Age.



All Brown Bag Lunch programs begin at 12 noon in the Bro Dining Room. Admission is FREE to the public and all are welcome. Bring your own lunch – we'll provide the coffee!

Future Brown Bag Lunch program:

May 12: **V is for Viking.** Julie Andersen shares her experience working at Denmark's Viking Ship Museum.

Exhibition Opening and Museum Shop Spring Open House

Celebrate Spring! Join us on Sunday, April 17, to enjoy a new exhibition, tasty refreshments, and wonderful new items in the museum shop. And the museum will be FREE to all visitors!

Special activities include:

- A gallery tour of the new exhibition, *Church Basements and Children's Homes: Danish-American Missions Here and Abroad*, 3pm
- A hymn sing-along of favorite mission-related hymns, 2pm
- Booksigning with Marilyn Juhl for her new book *Elim Children's Home*, 2-3pm

Refreshments available 1-4pm, including some "church basement" favorites! (Jello salad, anyone?) And the museum galleries and shop will remain open and FREE during the regular hours of noon to 5pm.



Opening Soon:

Church Basements and Children's Homes: Danish-American Missions Here and Abroad

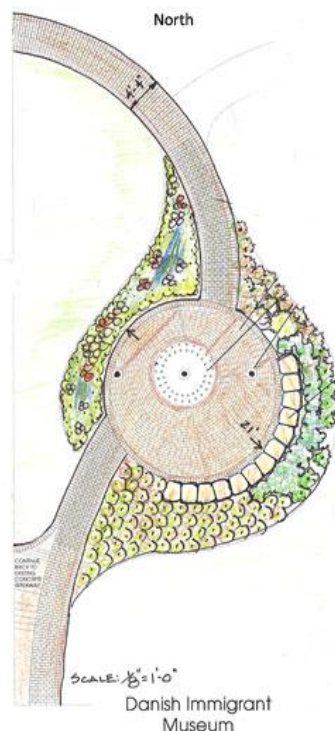
A new exhibition, *Church Basements and Children's Homes*, will be open to museum visitors from April 16 to October 31, 2011. It explores various examples of church-based efforts within Danish-American communities to support children's homes, mission schools, health care, and other social services for vulnerable people within the United States and around the world.

A **traveling version** of the exhibition will be available to museums, libraries, churches, and other cultural institutions and groups. This version will take the form of five retractable banners that are free-standing on the floor. Each banner will be nearly three feet wide and seven feet tall and combine texts and images that communicate the core content of *Church Basements and Children's Homes*. In addition, the video component of the exhibition will be sent on a DVD that each venue can play for their audience.



The traveling version will be available beginning April 2011 through 2013. For more information on renting this exhibition or other available displays, please contact Tova Brandt, Curator of Exhibitions, at 712-764-7001 or dkcur@metc.net. Both versions of *Church Basements and Children's Homes* are made possible by a major grant from Humanities Iowa and the National Endowment for the Humanities.

"Jens Jensen Heritage Path" - Breaking Ground this Spring



The museum is excited to announce that ground breaking will take place this Spring on Phase 1 of the "Jens Jensen Heritage Path". The initial site for construction is in front of the museum. The design is in harmony with the Jens Jensen Prairie Landscape style. The plaza and pathway feature commemorative bricks, a seating area of local stone and three flag poles. They are surrounded by native Iowa prairie plantings.

When you place a brick on the path, you pay tribute to a special person or occasion and support the creation of a distinctive landscape at the museum.

Don't miss this opportunity! Visit our [website](#) for details. You can now electronically fill out and send the order form to the museum.

Museum To Hold Book Sale

This year during Tivoli Fest, the Museum will hold a book sale. Hundreds of used titles in both Danish and English, fiction and non-fiction, will be available for purchase. These books have been given to the Museum since it began in 1983, and have been determined to be duplicates or titles that do not fit the needs of the Museum or the Family History and Genealogy Center. Join us for the Tivoli festivities and go home with “new” reading material!



Museum Shop's New Arrivals



Twilight Candleholders

stelton



Setting Bowls-5 pcs



Coffee Press
Red or Black available

To order or inquire about these items, call the Museum Shop at 800-759-9192.

Did You Know?

The Danes eat 8.5 million slices of rye bread every day!

For a glimpse of traditional Danish food culture visit www.copenhagenet.dk/cph-eating.htm



Mark Your Calendar: Live and Learn in Scenic Environs

The Danish Immigrant Museum invites and encourages you to attend one or all of these cultural enrichment opportunities in the coming year. Each offers opportunities for intellectual, cultural and spiritual growth in the best tradition of the Danish folk high schools.



June 24-26, 2011 *Danish Cultural Conference* at the Menucha Retreat and Conference Center overlooking the beautiful Columbia River Gorge near Corbett, Oregon. A full conference schedule for 2011 will be available soon at the website of the Northwest Danish Association: www.northwestdanishfoundation.org



August 17-21, 2011 *Fall Folk Meeting at Danebod* in Tyler, Minnesota. A sample of the programming from 2010 gives one an idea of what is being planned for this year. It's available at www.danebodlutheran.org. Click on the “Fall Folk Meeting” under the banner.



APRIL 2011

“Additional” News from The Danish Immigrant Museum

Danish Roots, American Branches

Last Chance to Register for Illinois Genealogy Workshop



April 22nd is the registration deadline for the Danish genealogy workshops at The Urbana Free Library on April 30th. Librarian Michele McNabb will give tips on researching Danish immigrants in the US and demonstrate some of the most useful websites for Danish research. Registration is required and may be done through Parkland College.

(http://www.parkland.edu/Media/Website_Resources/PDF/classSchedule/Spring_Non_Credit_Schedule.pdf) workshop WCE 302-001). The fee is \$30.

And Colorado, here we come! The Museum will also be holding a series of five workshops on Danish genealogy in Colorado in conjunction with its June board meeting. The workshops will be held at the Sheraton Denver West in Lakewood on June 9-11. Topics covered will include resources to look for before searching in Denmark, common Danish resources, useful Danish websites, and researching ancestors from Schleswig (Slesvig). Workshop information and registration forms are on the Museum webpage under Library & Genealogy / Workshops & Talks.

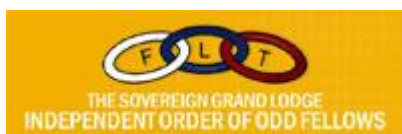
Some Heady Stuff!

May 1st is the deadline for submissions to the FHGC of immigrant or family photographs where the individuals have something on their heads. Whether your ancestors wore hats, caps, bonnets or headscarves, we'd like to see what they looked like!

If you have an interesting photograph fitting the above category please share it with us for our upcoming summer photograph exhibit. Print copies (not photocopies) or digital images may be sent to Photo Display, Family History & Genealogy Center, PO Box 249, Elk Horn IA 51513 or to librarian@danishmuseum.org. They should be accompanied by identifying information (who, where, when) and a Permission to Display/Information form, which can be down-loaded from the museum website under Library & Genealogy / Photo Gallery.



Danish IOOF in Omaha?



We've recently learned that there was a Danish lodge of the International Order of Odd Fellows that purchased lots in Springwell Cemetery in Omaha in the early 20th century. We would like to obtain more information about this group. If you have any photographs or information about it, or know where some might be found, please contact Michele at librarian@danishmuseum.org or 877.764.7008.